

# BlueBottle Expendable EW Payload



*BlueBottle offers a new solution that can provide a multitude of battlefield capabilities and RF superiority*

The BlueBottle is a multi-mission software-defined radio capable of RF signal detection and countermeasure generation based on a novel flexible architecture.

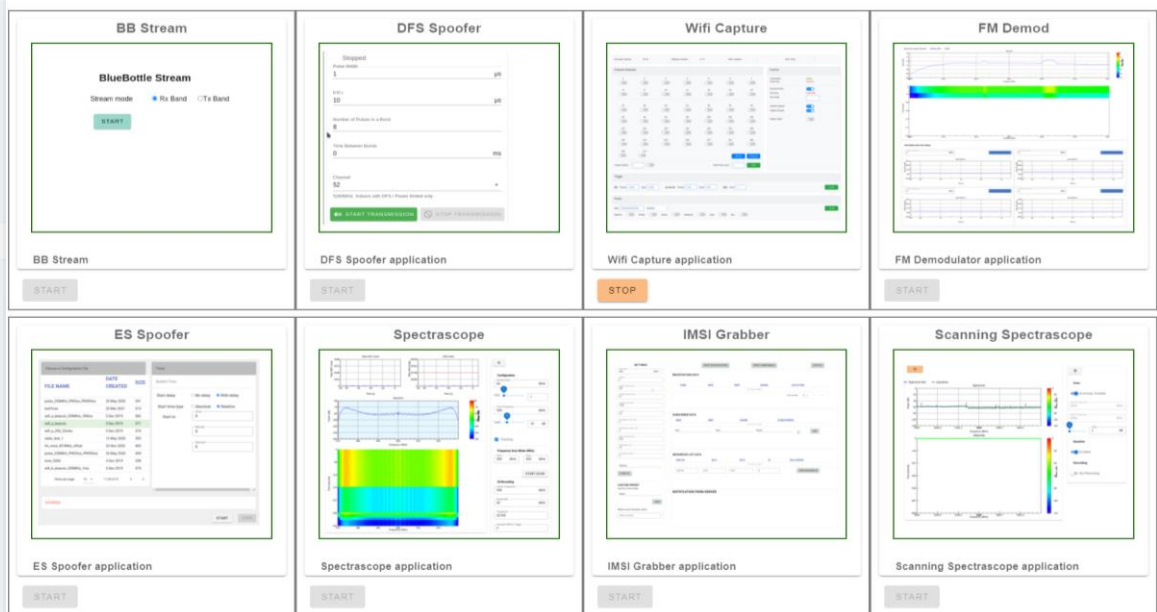
In the BlueBottle eco-system the mission apps are offered through a browser-based interface and the mission apps can operate on standalone units or as part of an integrated network of BlueBottle units, further

expanding functionality for distributed electromagnetic (EM) operations.

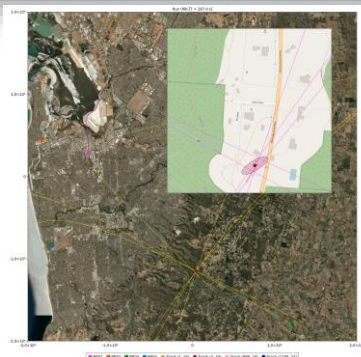
This ecosystem also enables the system backend software to be readily adopted to counter rapidly evolving threats in the theatre, providing a high EM spectrum domination with a minimum cost-of-ownership.

## Multi-mission software defined radio platform with an EW mission appstore

### Applications



*Geolocation using four networked BlueBottles*



*Register your interest here*

+61 8 7221 1630 | [info@solinnov.com.au](mailto:info@solinnov.com.au) | [www.solinnov.com.au](http://www.solinnov.com.au)  
Endeavour House, 11-15 Fourth Ave, Mawson Lakes SA 5095, Australia



# BlueBottle Expendable EW Payload



## SPECIFICATIONS

**Operating bandwidth:** 5 MHz to 6 GHz  
**Instantaneous bandwidth:** 60 MHz  
**Size:** 410 cm<sup>3</sup>  
**Weight:** 465 g  
**Maximum power consumption:** <12.5 W (typically less than 10 W)  
**Input voltage:** 10V - 15V (12V nominal)  
**GPS:** u-blox NEO-M8T  
**Multiple unit timing accuracy:**  $\pm 30$  ns (stationary setup)  
**Operating temperature:** -10°C to 50°C  
**RX power input:** Max 6 dBm (operational 0 dBm)  
**TX power output:** Max 0 dBm  
**Impedance TX/RX:** 50  $\Omega$   
**Data capture and playback buffers:**  
    Fast 128 MB DDR4 buffer (bw  $\leq$  60 MHz)  
    Slow 100 GB SD card buffer (bw  $\leq$  2 MHz)

## FEATURES

Tamper-proof and encrypted  
Control via web interface  
Network connectivity via USB or ethernet  
GPIO interface for external control  
Separate high band and low band RF connectors  
External 10MHz input and output  
External 1PPS input  
USB-OTG

*Register your interest here*

